

Before You Add On: 7 Smart Steps to a Seamless Home Addition

A helpful guide for homeowners planning a thoughtful, code-compliant home expansion.



Shull Architecture
info@shullarchitecture.com
www.shullarchitecture.com | 401-439-7786

Why This Guide Matters...

Before You Call a Contractor, Get a Clear Plan

Home additions can solve big problems—but they also come with big decisions.

This guide shows you what to know *before* getting quotes or breaking ground, so your project meets your goals, follows the rules, and blends beautifully with your home.



Step 1 - Know What You're Solving For

Start with your goals. Do you need more space for a growing family? An in-law suite? A bigger kitchen? An ADU?

Get clear on the *why* before jumping to the *what*.

✂ Pro Tip: The right design depends on the right priorities.

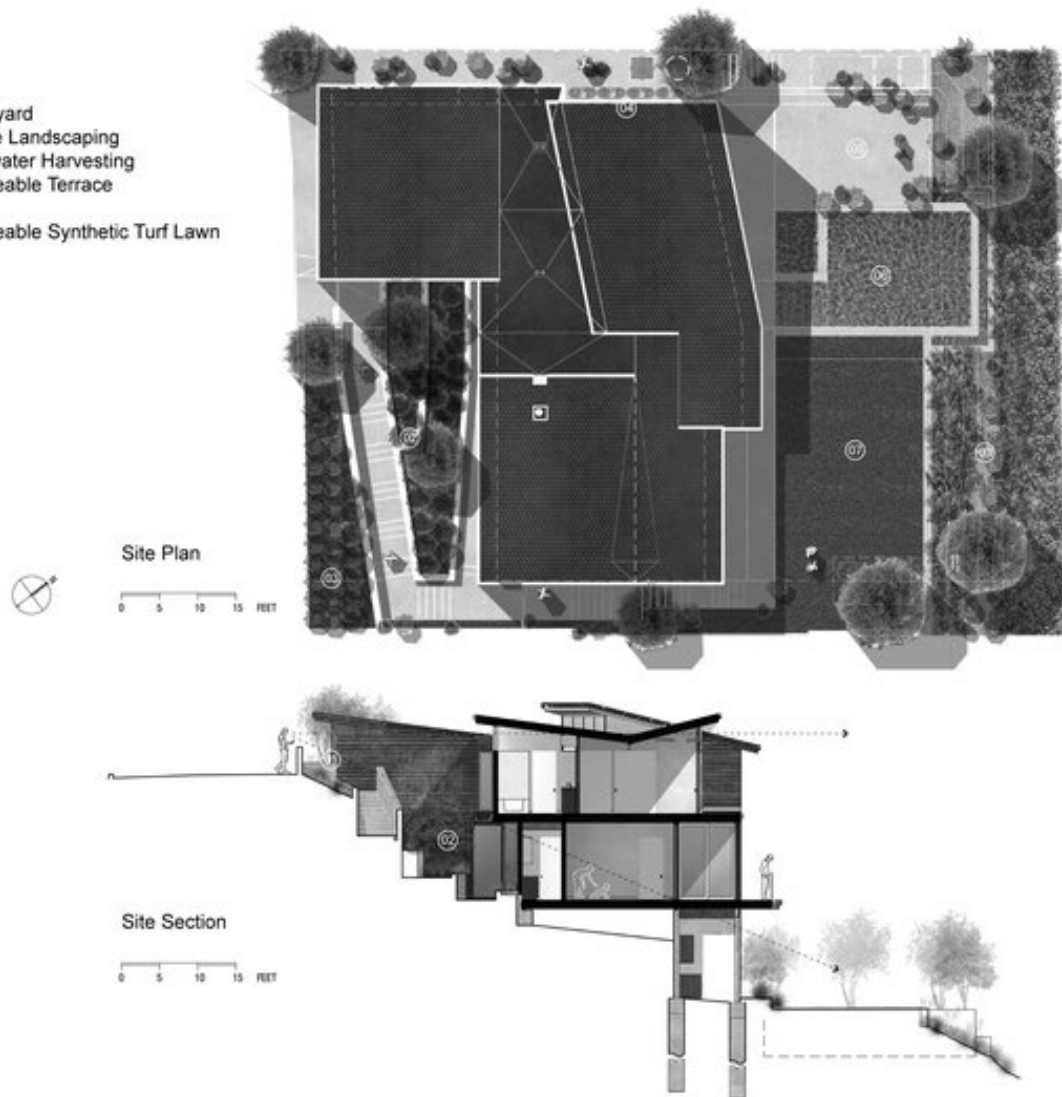


Step 2 – Understand What’s Possible on Your Property

Zoning, septic, lot coverage, and setbacks all impact where and how you can build. An architect helps you understand what’s feasible and what’s smart.

✂ Pro Tip: What’s allowed on paper may not always make sense in real life.

- 01 Entry
- 02 Courtyard
- 03 Native Landscaping
- 04 Rainwater Harvesting
- 05 Permeable Terrace
- 06 Pool
- 07 Permeable Synthetic Turf Lawn



Step 3 – Think About the Whole House

It's not just about square footage. The best additions feel like they've always been there. Consider flow, daylight, layout, and how your new space connects to the rest of the home.

✂ Pro Tip: Don't just add space—add comfort, beauty, and long-term value.



Step 4 – Have a Realistic Budget and Timeline

Construction costs, permits, design fees, and updates to existing systems all add up. Plan for a contingency and be realistic about time frames.

✂ Pro Tip: Good drawings = more accurate pricing = fewer change orders.



Step 5 – Understand the Design & Permit Process

Design usually follows these phases:

Schematic Design → Construction Drawings → Permitting

Most towns require full, code-compliant plans for permit approval.

✂ Pro Tip: A thorough design phase avoids delays and surprises during construction.



Step 6 – Integrate It Beautifully

Your addition should feel natural — or make a bold, intentional design statement. Architects help with rooflines, scale, transitions, and materials so it *works*.

✂ Pro Tip: Design is more than adding square footage — it's about getting it right.



Step 7 – Choose the Right Team

Architects and builders each bring strengths to your project. The best results come from collaboration. Look for professionals who communicate well and respect your goals.

✂ Pro Tip: A good team solves problems before they happen.



Your Architect's Role


We help you get it right — from day one. We assess your site, help you avoid mistakes, and guide you from design through permits and construction.



✔ Let's talk about your home addition ideas — and how to make them happen smoothly.

 info@shullarchitecture.com

 www.shullarchitecture.com

 401-439-7786